

SUN METALS

High Performance Commercial Windows

High Rise Residential



Office Buildings



Mixed Use Buildings



Sports Facilities



Hospitality



Government



Amusement Parks



Institutional



Historical



SUN METALS SYSTEMS

www.sunmetalsystems.com

Impact • Blast • Thermal • Windows • Window Wall • Curtain Wall • Doors • Railings

"Where value meets performance in architectural glazing"

Sun Metals Systems

Sun Metals Systems is an innovative manufacturer of commercial glazing systems that meet the high-performance demands of the Continental U.S.. The company offers a comprehensive line of hurricane-resistant products, including architectural windows, doors and curtain wall systems, that meet even the most demanding specifications.

All Sun Metal systems are designed in-house with a focus on quality and cost, resulting in maintenance-free, cost-competitive products. Sun Metals is also committed to meeting and exceeding energy efficiency standards. Its thermally broken systems, insulated glass makeups and high-performance glass coatings offer customers the highest energy performance possible.

The Sun Metals Advantage

At Sun Metals, our business philosophy is simple: we provide high-quality glazing solutions at competitive prices with unparalleled customer support.

Sun Metals offer three distinct advantages that sets us apart from the rest:

1. Unitized Systems

Sun Metals unitized systems offer customers outstanding quality, rapid installation and superior system performance. Fabrication, assembly and even glass installation occurs in our own factory environment, allowing us to carefully control the quality of our products.

Installing the assembled units is simple, reducing field installation time and overall project cost. Once installed, Sun Metals unitized systems offer significantly greater performance than a stick-built system, including better movement load bearing capacity and water penetration resistance, all for a competitive price.

2. In-House Product Design

Having an in-house product design and engineering team means we control every aspect of our products, from concept through fabrication, guaranteeing our customers the high-quality systems they have come to expect of Sun Metals.

Not only does the Sun Metals design team create our own standard product lines, but it is also available to help customers with any project, from simple to complex. Want to know how a system will fit within your current project? Or find out if a certain design will meet code requirements? Our in-house team has you covered.

3. High-Performance Systems

Impact-resistance is critical for buildings in the Southeastern United States, and high-performance impact-resistance systems are our specialty. All Sun Metals systems – including our new line of thermal products – meet stringent impact-resistant standards



Sun Metals' Product Portfolio

Sun Metals Systems engineers, designs and manufacturer's commercially rated aluminum windows, sliding glass doors, skylight systems, glass handrails and custom glazing systems. Sun Metals offers the highest quality and performance at a competitive price. The Sun Metals' product line consists of large and small missile impact approved products, meeting both Miami-Dade and the State of Florida code requirements. Sun Metals also offers a full line of thermally broken glazing systems to meet the most stringent thermal demands.

Impact-Resistant Products

- Series 250-V, Project Out Window
- Series 250-H, Project In Window
- Series 250-C, Casement Window
- Series 275-SH, Single Hung Window
- Series 275-F, Fixed Window
- Series 450, Fixed Window Wall
- Series 550, Fixed Window Wall
- Series 650, Fixed Window Wall
- Series 825, Curtain Wall
- SunDor 5000 Sliding Glass Door

Impact-Resistant & Thermally Broken Products

- Series 300-V, Project Out Window
- Series 300-C, Casement Window
- Series 400-HW, Single Hung Window
- Series 400-SW, Horizontal Roller
- Series 400T, Fixed Window
- Series 700, Unitized Curtain Wall (*Non-Impact*)
- Series 600T- Window Wall (*Non-Impact*)
- SunDor 4000T- Terrace Patio Door (*Non-Impact*)

Custom Products

- Aluminum & Glass Handrails
- Blast Glazing Systems
- Acoustical Glazing Systems



Impact Resistant– Non Thermal

Sun Series 250 Operable Windows

- Available as Awning, Hopper Projected and Casement.
- 2-1/2" Frame Depths
- Single and multi-unit configurations
- Large & small missile impact rated
- Turtle code compliant glazing
- Tinted and Low-E coatings
- Single & double applied muntins
- Available receptor system, or can be glazed into our series 450, 550, or 650 windows
- Wide variety of locking and operating hardware options.

Available Glazing Options

- 1" Insultated
- 1-1/16" Insulated Laminated Impact
- Class 1 anodized finishes
- Duracron baked enamel
- Kynar 500 standard and custom colors

Sun Series 275-HW Hung windows

- Equal Leg Framing
- Tubular Construction
- Concealed interior fasteners
- Two and three lite versions
- Single and multi-unit configurations
- Large & small missile impact rated
- Turtle code compliant glazing
- Tinted and Low-E coatings
- Single & double applied muntins
- Available receptor system, or can be glazed into our series 450, 550, or 650 windows

Available Options

- 1/4" Non-Impact monolithic
- 5/16" Laminated Impact
- 9/16" Laminated Impact
- Class 1 anodized finishes
- Duracron baked enamel
- Kynar 500 standard and custom colors



The Regatta, Miami Beach, FL



Nu River Village, Ft Lauderdale, FL

Impact Resistant– Non Thermal

Sun Series 275 Fixed Window

- 2-3/4" Frame depth
- Interior Nail flange
- Screw spline & tubular construction
- Equal Leg Framing
- Single and multi-unit configurations
- Large & small missile impact rated
- Turtle code compliant glazing
- Tinted and Low-E coatings
- Single & double applied muntins
- Available receptor system,

Available Options

- 1/4" Non-Impact monolithic
- 5/16" Laminated Impact
- 9/16" Laminated Impact
- Class 1 anodized finishes
- Duracron baked enamel
- Kynar 500 standard and custom colors

Sun Series 400 Fixed Window

- Commercial Grade
- 4" Frame Depths
- Single and multi-unit configurations
- Large and Small missile impact rated
- Unitized Construction
- Tinted and Low-E coatings
- Single & double applied muntins
- Available receptor system

Available Glazing Options

- Integrated Vents and Patio doors
- 9/16" Impact Laminated
- 1" Insulated
- 1-1/16" Insulated Laminated
- Class 1 anodized finishes
- Duracron baked enamel



Esperia South, Bonita Bay, FL



U.S. Centcom Headquarters, Tampa, FL

Impact Resistant– Non Thermal

Sun Series 450 Window Wall system

- 4-1/2" Frame Depth
- Available in 5-1/2" Frame depth
- Commercial grade
- Screw spline construction
- Equal leg framing
- Single and multi-unit configurations
- Exterior glazing
- Unitized construction
- Large and small missile impact rated
- Stainless Steel assembly screws
- Standard colors: white, silver, bronze

Available Options

- 1/4" Non-Impact monolithic
- 9/16" Laminated Impact
- 1" Insulated
- 1-5/16" Insulated Laminated Impact
- Class 1 anodized finishes
- Duracron baked enamel
- Kynar 500 standard and custom colors

Sun Series 550/650 Window Wall system

- 5.5, 6.5" Frame Depths
- Commercial grade
- Screw spline construction
- Equal leg framing
- Single and multi-unit configurations
- Exterior glazing
- Unitized construction
- Large and small missile impact rated
- Stainless Steel assembly screws
- Standard colors: white, silver, bronze

Available Options

- 1/4" Non-Impact monolithic
- 9/16" Laminated Impact
- 1" Insulated
- 1-5/16" Insulated Laminated Impact
- Class 1 anodized finishes
- Duracron baked enamel
- Kynar 500 standard and custom colors



Grand Central, Tampa, FL



The Vue, Orlando, FL



Impact Resistant– Thermal

Sun Series 300 Operable Windows

- Available as Awning, Hopper Projected and Casement.
- 3" Frame Depths
- Pour & Debridge Thermal Break
- Single and multi-unit configurations
- Large & small missile impact rated
- Tinted and Low-E coatings
- Single & double applied muntins
- Available Thermally Broken receptor system, or can be glazed into our series 400, 600T windows
- Wide variety of locking and operating hardware options.

Available Glazing Options

- 1" Insulated
- 1-1/16" Insulated Laminated Impact
- Class 1 anodized finishes
- Duracron baked enamel
- Kynar 500 standard and custom colors

Sun Series 400-HW Single Hung window

Sun Series 400-SW Horizontal Sliding Window

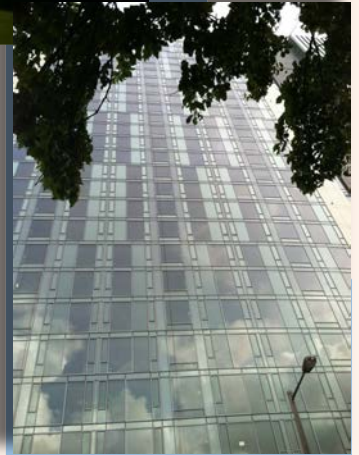
- 4" Frame Depth
- Pour & Debridge Thermal Break
- Equal Leg Framing
- Tubular Construction
- Concealed interior fasteners
- Two and three lite versions
- Single and multi-unit configurations
- Large & small missile impact rated
- Tinted and Low-E coatings
- Single & double applied muntins
- Available Thermally Broken receptor system

Available Options

- 1" Insulated
- 1-1/16" Insulated Laminated Impact
- Class 1 anodized finishes
- Duracron baked enamel
- Kynar 500 standard and custom colors



Temple University– Morgan Hall
Philadelphia, PA



Bay Club 1 & 2
Palmetto, FL



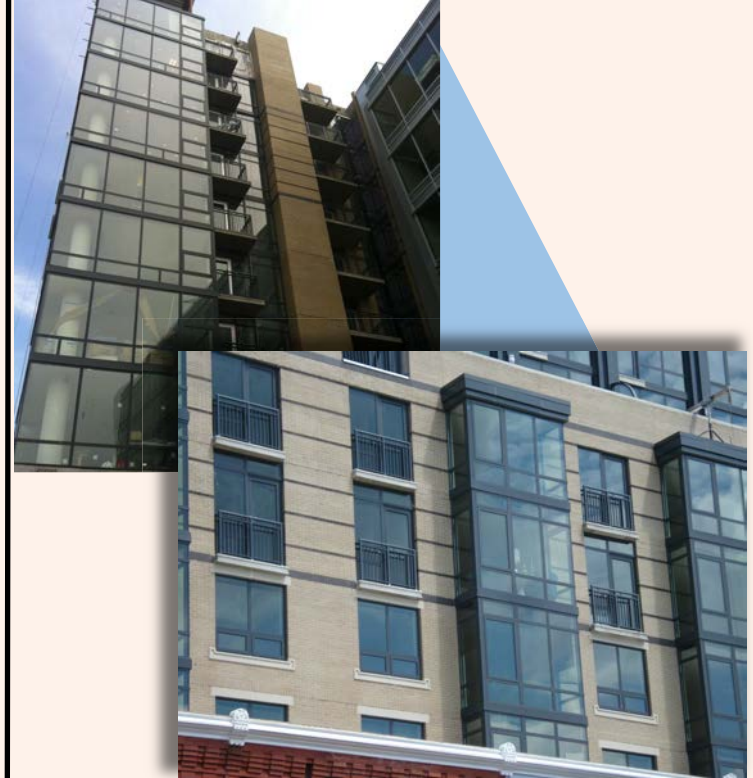
Impact Resistant– Thermal

Sun Series 400T Fixed Window

- Commercial Grade
- 4" Frame Depths
- Pour & Debridge Thermal Break
- Single and multi-unit configurations
- Large and Small missile impact rated
- Unitized Construction
- Tinted and Low-E coatings
- Single & double applied muntins
- Available Thermally Broken receptor system

Available Glazing Options

- Polyamide Iso-Bar Thermal Break
- Integrated Vents and Patio doors
- 9/16" Impact Laminated
- 1" Insulated
- 1-1/16" Insulated Laminated
- Class 1 anodized finishes
- Duracron baked enamel
- Kynar 500 standard and custom colors



7th Street Flats, Washington, DC

Non Impact Resistant– Thermal

Sun Series 600T Window Wall–Non Impact

- Commercial Grade
- 6" Frame Depths
- Polyamide Iso-Bar Thermal Break
- Single and multi-unit configurations
- Tinted and Low-E coatings
- Unitized Construction
- Single & double applied muntins
- Available Thermally Broken receptor system

Available Glazing Options

- Integrated Vents and Patio doors
- 1" Insulated
- Class 1 anodized finishes
- Duracron baked enamel
- Kynar 500 standard and custom colors



Federal Energy Regulatory Commission Bldg, Washington, DC

Impact/Non Impact Resistant- Thermal

Sun Series 700 Curtain Wall—Non Impact

- 7" Frame Depth
- Commercial grade
- Thermally improved
- Captured or Structurally glazed
- 2 sided or 4 sided SSG
- Screw spline construction
- Equal leg framing
- Single and multi-unit configurations
- Exterior glazing
- Unitized construction
- Non impact rated
- Standard colors: white, silver, bronze

Available Options

- Integrated Vents
- 1/4" Non-Impact monolithic
- 1" Insulated
- Class 1 anodized finishes
- Duracron baked enamel
- Kynar 500 standard and custom colors

Sun Series 825 Curtain Wall—Impact

- 8.25" Frame Depth
- Commercial grade
- Thermally improved
- Captured or Structurally glazed
- Screw spline construction
- Large and Small missile impact rated
- Single and multi-unit configurations
- Exterior glazing
- Stick construction
- Standard colors: white, silver, bronze

Available Options

- Integrated Vents and Patio doors
- 9/16" Impact Laminated
- 1" Insulated
- 1-1/16" Insulated Laminated
- Class 1 anodized finishes
- Duracron baked enamel
- Kynar 500 standard and custom colors



The Westin, Charlotte, NC



Palm Beach Judicial Center, West Palm Beach, FL

Impact Resistant– Non Thermal

SunDor 5000 Sliding Glass Door

- Commercial Grade
- 4" Frame Depths
- Poured & debridged thermal break
- Multiple glazing options for improved STC's
- Screw spline construction
- Equal leg framing
- Single and multi-unit configurations
- 1-1/2" Stainless Steel tandem rollers
- Large & small missile impact rated
- Turtle code compliant glazing
- Tinted and Low-E coatings

Available Glazing Options

- 9/16" laminated Impact
- 1" Insulated
- 1-1/16" Insulated Laminated Impact
- Class 1 anodized finishes
- Duracron baked enamel
- Kynar 500 standard and custom colors

Non-Impact Resistant– Thermal

SunDor 4000 Architectural Terrace Door

- Polyimide Iso-bar Thermal Break
- Equal Leg Framing
- Tubular Construction
- Concealed interior fasteners
- Two and three lite versions
- Single and multi-unit configurations
- Large & small missile impact rated
- Turtle code compliant glazing
- Tinted and Low-E coatings
- Single & double applied muntins

Available Options

- 1/4" Non-Impact monolithic
- 1" Insulated
- Class 1 anodized finishes
- Duracron baked enamel
- Kynar 500 standard and custom colors



The Signature Place, St Petersburg, FL



7th St Flats, Washington, DC

Impact/Non Impact Resistant

Sun Series Hand Railing *Outside or Inside Glazed*

- Commercial Grade
- 3.5" Frame Depths
- Screw Spline Construction
- Exterior glazing
- Center Glazing
- Unitized construction
- Monolithic and Laminated glazing available
- Stainless Steel assembly screws
- Standard colors: white, silver, bronze
- Custom colors available

Available Glazing Options

- Class 1 Anodized finishes
- Duracron baked enamel
- Kynar 500 Standard and custom colors
- Turtle code compliant glazing
- 9/16", 3/8" and 1/4" Glazing
- Tinted and Low-E coating
- Multiple Cap Options





5008 Tampa West Blvd.

Tampa, FL 33634

Phone 813.889.0718

Fax 813.881.0812

SUN METALS SYSTEMS

www.sunmetalsystems.com

"Where value meets performance in architectural glazing"